

LIBRARY

The Alele Library is the only public library in the Marshall Islands and is used by all age groups. Most of our general collections are books which have been donated by various people through the years, so there is a large variety of reading materials. We have a children's reading room with books that are new and relevant for the children. Also in the library is the Pacific Collection Room, which contains a large collection of various types of documents and books related to the Marshall Islands and other areas of the Pacific region. Researchers often use these materials extensively when they are doing onsite research about the Micronesian region. The library also has a bookmobile that visits the rural areas of Majuro every Saturdays. It offers services of borrowing books and internet surfing.



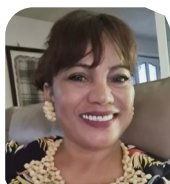
CONTACT US

PHONE: (692) 625-3372
 EMAIL: alelemuseumandlibrary@gmail.com
 WEBSITE: alele.org
 ADDRESS: P.O. Box 629 Majuro, MH 96960



Honorable Minister Jess Gasper Jr.
 Ministry of Culture & Internal Affairs

BOARD OF TRUSTEES



Brenda Alik
 Chairperson



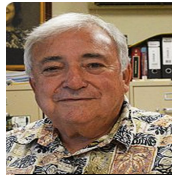
Reginald White
 Vice Chair



Kanchi Hosia
 Member



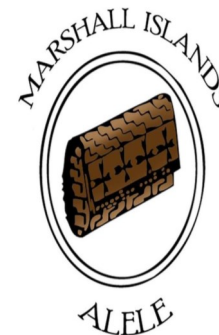
Christopher Loek
 Member



Jerry Kramer
 Member



Mabel Peter
 Member



Wisse Amram
 Executive Director

Alele Incorporation

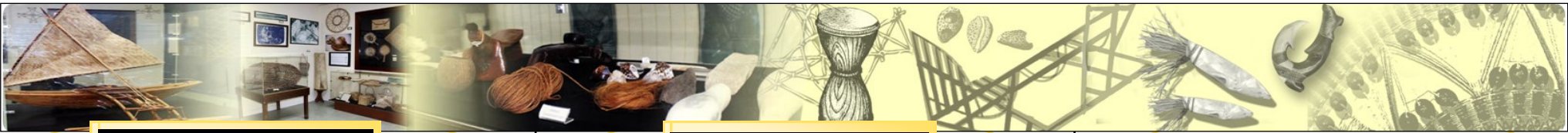
Alele is a non-profit corporation dedicated to preserving the history and conserving the traditional arts and skills, the historic accounts, the oral literature and other traditions of our islands. The name Alele comes from the finely plaited baskets used in times past by Marshall Islanders to store valuable personal items.

There are three main components to Alele – the National Museum, the Public library, and the National Archives.

MEMBERSHIP FEES:

- annual fee.... \$50
- lifetime fee.... \$100

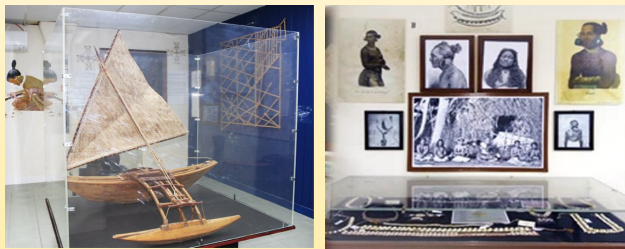




MUSEUM

Alele is a cultural museum, displaying artifacts of the islands that presently are becoming very rare and valuable and need to be preserved. We have traditional tools, clothing, fishing methods, outrigger canoes, navigational instruments, traditional housing, and various types of other items on display.

Different photographic exhibits are periodically produced and displayed in the museum. At present four photographic exhibits are on display, which include photos of the Irooj and Lerooj (Chiefs and Chieftesses) during the German period, photos of the nuclear tests on Enewetak and Bikini atolls from 1946 to 1958, photos from the first inauguration of the first President of the Republic of the Marshall Islands, and photos of all the atolls and single islands of our country.



LUTOK KOBBAN ALELE

The last Friday in September is designated by the government as “Manit” (Cultural) Day. Celebrations are held yearly with presentations, cultural dancing, songs, games, canoe races, and fishing competitions. Large numbers of people participate in these activities.



Tours through the museum and library are available upon request. Every year hundreds of school children come with their class to explore our museum and library.

OPENING HOURS

Mondays-Fridays	8:00am—5:00pm
Saturdays-Sundays	closed
National Holidays	closed